

LUXEMBOURG + CO.

At the Edge of Pictures: John Stezaker, Works 1975–1990



JOHN STEZAKER (b.1949)
The End (The Film), 1975
Three cut postcards on black paper support
14 1/2 x 10 3/8 in. (36.7 x 26.5 cm.)
Tate Modern, London



JOHN STEZAKER (b.1949)
Untitled (Assisted readymade), 1977
Found image
10 5/8 x 7 5/8 in. (27 x 19.4 cm.)

LUXEMBOURG + CO.



JOHN STEZAKER (b.1949)
Untitled (Photoroman), 1977
Cut photographic reproductions on paper
12 5/8 x 16 1/2 in. (32 x 42 cm.)



JOHN STEZAKER (b.1949)
Sleep (Photoroman), 1976
Cut and torn photographic reproductions and
illustrations on paper
2 1/4 x 2 3/8 in. (5.7 x 6 cm.)



JOHN STEZAKER (b.1949)
Touch III (Photoroman), 1978
Cut photographic reproductions on paper
16 1/2 x 12 5/8 in. (42 x 32 cm.)



JOHN STEZAKER (b.1949)
The Trial, 1978
Postcard on film still photograph
7 3/4 x 9 3/4 in. (19.8 x 24.8 cm.)
Tate Modern, London



JOHN STEZAKER (b.1949)
The Oath, 1978
Postcard and film-still photograph
7 3/4 x 9 3/4 in. (19.8 x 24.8 cm.)
Tate Modern, London

LUXEMBOURG + CO.



JOHN STEZAKER (b.1949)
Untitled (Film Still Collage) XXX, 1978
Postcard on film still photograph
8 1/4 x 10 5/8 in. (20.8 x 27 cm.)



JOHN STEZAKER (b.1949)
Blind, 1979
Postcard and film-still photograph
7 5/8 x 9 1/2 in. (19.5 x 24 cm.)
Rubell Museum, Miami



JOHN STEZAKER (b.1949)
Untitled, 1979
Postcard on film still photograph
9 1/2 x 7 1/2 in. (24.1 x 19.1 cm.)



JOHN STEZAKER (b.1949)
The Trial, 1980
Postcard and film-still photograph
7 1/2 x 9 1/2 in. (19 x 24.2 cm.)
Rubell Museum, Miami



JOHN STEZAKER (b.1949)
Untitled, 1981
Postcard on film still photograph
7 1/4 x 9 5/8 in. (18.5 x 24.5 cm.)

LUXEMBOURG + CO.



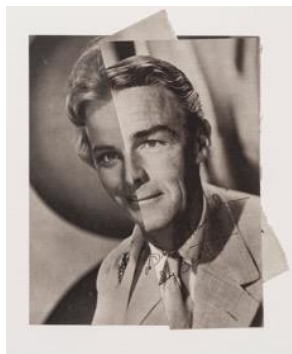
JOHN STEZAKER (b.1949)
Mask X, 1982
Postcard on film still photograph
11 3/4 x 8 1/8 in. (29.8 x 20.5 cm)



JOHN STEZAKER (b.1949)
Marriage, 1988-89
Cut photographic reproductions on paper
10 7/8 x 8 1/4 in. (27.5 x 20.9 cm.)

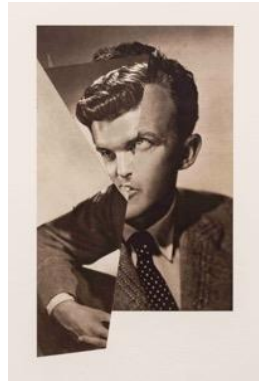


JOHN STEZAKER (b.1949)
Marriage 'He', 1988-89
Cut photographic reproductions on paper
10 7/8 x 8 1/4 in. (27.5 x 20.9 cm.)



JOHN STEZAKER (b.1949)
Marriage, 1988-89
Cut photographic reproductions on paper
10 7/8 x 8 1/4 in. (27.5 x 20.9 cm.)

LUXEMBOURG + CO.



JOHN STEZAKER (b.1949)
Untitled, 1989-90
Cut photographic reproductions on paper
8 7/8 x 6 1/8 in. (22.4 x 15.7 cm.)



JOHN STEZAKER (b.1949)
Dark Star I, 1979
Cut photographic reproduction on black card paper
8 7/8 x 7 1/8 in. (22.5 x 18.2 cm.)
(STEZ_049)



JOHN STEZAKER (b.1949)
Recto-Verso, 1980
Cut photographic reproduction on black card paper
17 3/4 x 13 3/4 in. (45 x 35 cm.)



JOHN STEZAKER (b.1949)
Father Sky, 1989
Cut photographic reproductions
20 1/4 x 15 7/8 in. (51.4 x 40.3 cm.)

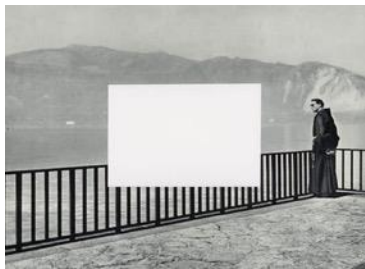
LUXEMBOURG + CO.



JOHN STEZAKER (b.1949)
Voyeur, 1979
Cut film-still photograph on black paper support
8 1/8 x 14 3/8 in. (20.6 x 36.4 cm.)



JOHN STEZAKER (b.1949)
The End (The Film), 1975
Cut postcard on black paper support
4 1/8 x 6 1/8 in. (10.5 x 15.5 cm.)



JOHN STEZAKER (b.1949)
Tabula Rasa II, 1983
White card on film still photograph
6 1/8 x 8 1/8 in. (15.6 x 20.5 cm.)



JOHN STEZAKER (b.1949)
Tabula Rasa III, 1990
Cut photographic reproduction on paper
9 1/2 x 7 1/2 in. (24 x 19 cm.)

LUXEMBOURG + CO.



JOHN STEZAKER (b.1949)
Tabula Rasa IV, 1990
Cut photographic reproduction on paper
9 7/8 x 7 7/8 in. (25 x 20 cm.)



JOHN STEZAKER (b.1949)
Untitled, 1978-9
Silkscreen on canvas
48 1/8 x 66 in. (122 x 167.5 cm.)



JOHN STEZAKER (b.1949)
Untitled, 1978-9
Silkscreen on canvas
48 1/8 x 66 in. (122 x 167.5 cm.)



JOHN STEZAKER (b.1949)
Untitled, 1983
Silkscreen on canvas
58 1/4 x 39 in. (148 x 99 cm.)

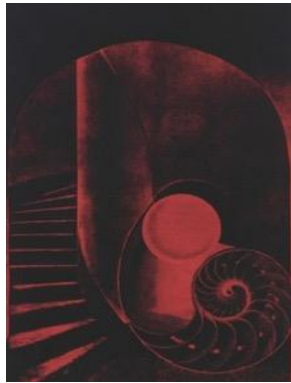


JOHN STEZAKER (b.1949)
Care, 1987-89
Silkscreen on canvas
55 7/8 x 71 5/8 in. (142 x 182 cm.)

LUXEMBOURG + CO.



JOHN STEZAKER (b.1949)
Observatory, 1988-89
Cut xerox reproductions
15 5/8 x 15 7/8 in. (39.8 x 40.2 cm.)



JOHN STEZAKER (b.1949)
Untitled, 1989
Silkscreen on canvas
83 7/8 x 57 1/8 in. (213 x 145 cm.)



JOHN STEZAKER (b.1949)
Untitled, 1989
Silkscreen on canvas
84 1/8 x 29 1/2 in. (213.5 x 75 cm.)



JOHN STEZAKER (b.1949)
Care, 1989-90
Cut film-still photograph on black paper support
7 7/8 x 10 1/8 in. (20 x 25.6 cm.)